

Grace Notes and Embellishments

- The codes for grace notes and embellishments must always be in lowercase letters and must appear before the code for a melody note.
- The codes for single grace notes begin with the note of the grace note followed by the letter g for grace note (i.e. gg dg eg tg for High G, D, E, and Thumb (High grace notes, respectively).
- The codes for embellishments (multiple grace notes) begin with the type of movement (db for doubling, hdb for half doubling, etc.) and generally end with the letter denoting the major note of the embellishment (e.g. tdbd for thumb doubling on D, gstb for G grace note strike on B, etc.)
- Generally, g and t are the first letters of the codes for embellishments that begin with a High G or High A grace note, respectively. h is the first letter for embellishments that are "half" versions of the embellishment.
- Strikes are special exceptions for the coding of single grace notes. Strikes are coded with the characters str followed by the note that is being struck (e.g. strlg denotes a single grace note striking Low G).
- Some embellishments are played the same no matter what the starting and ending melody notes are (e.g. grp for grip, tar for taorluath, etc.)

Single Grace notes



The image shows a musical staff in treble clef with a key signature of one sharp (F#). The staff contains a sequence of notes: a quarter note G4, followed by a series of eighth notes G4, F#4, E4, D4, C4, B3, A3, and G3. Below the staff, the following codes are listed: ag, bg, cg, dg, eg, fg, gg, tg. Each code is positioned directly under its corresponding note on the staff.

ag bg cg dg eg fg gg tg

Regular, Thumb and Half Doublings



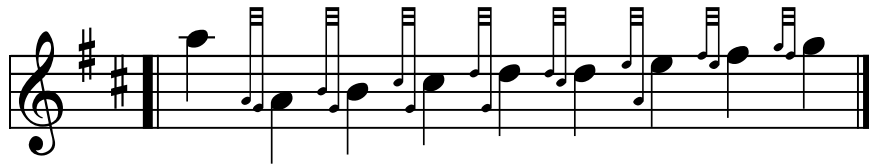
dblg dbla dbb dbc dbd dbe dbf dbhg dbha
tdblg tdbla tdbb tdbc tdbd tdbe tdbf
hdblg hdbla hdbb hdbc hdbd hdbe hdbf

Single Strikes



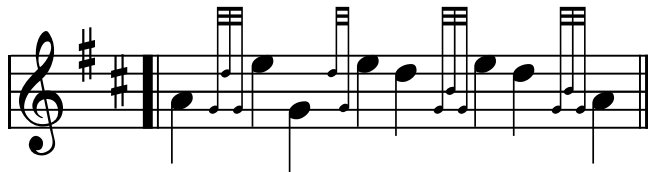
strlg strla strb strc strd stre strf strhg

G Grace note, Thumb and Half Strikes



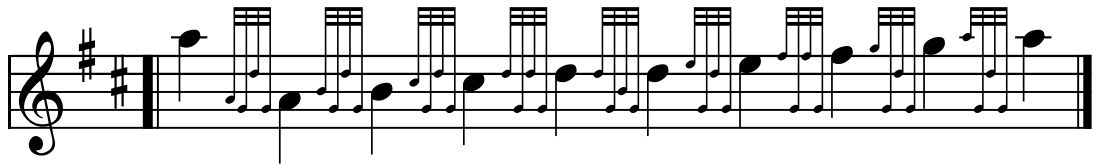
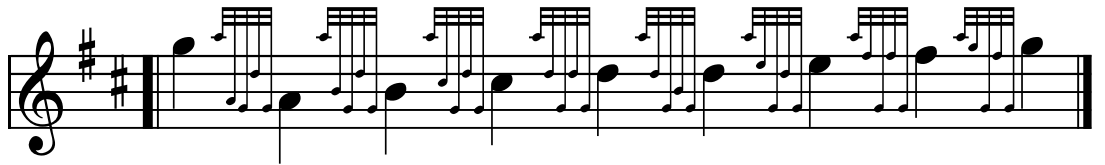
gstla gstb gstc gstd lgstd gste gstf
tstla tstb tstc tstd ltstd tste tstf tsthg
hstla hstb hstc hstd lhstd hste hstf hsthg

Regular Grips



grp hgrp grpb grpb

G Grace note, Thumb and Half Grips

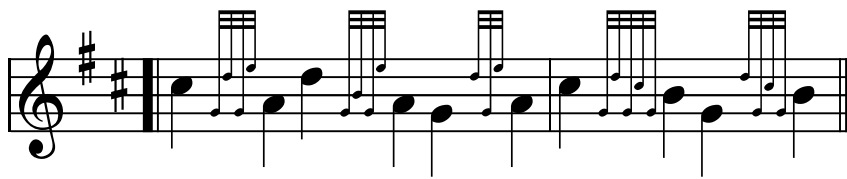


ggrpla ggrpb ggrpc ggrpd ggrpdb
ggrpe ggrpf

tgrpla tgrpb tgrpc tgrpd tgrpdb
tgrpe tgrpf tgrphg

hgrpla hgrpb hgrpc hgrpd hgrpdb
hgrpe hgrpf hgrphg hgrpha

Taorluaths and Bublys



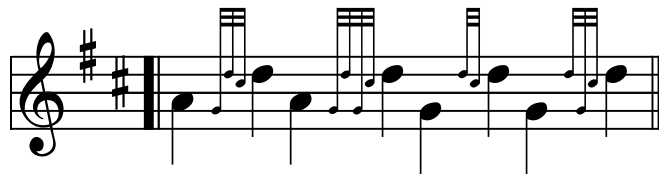
tar tarb htar bubly hbubly

Birls



brl abr gbr tbr

Light, Heavy and Half D Throws



thrd hvthrd hthrd hvthrd

Regular, Thumb Grace note and Half Peles



pella pelb pelc peld lpeld pele pelf
tpella tpelb tpelc tpeld ltpeld
tpele tpelf tpelhg
hpella hpelb hpelc hpeld lhpeld
hpele hpelf hpelhg

Regular Double Strikes



st2la st2b st2c st2d lst2d st2e st2f st2hg

st2ha

G Grace note, Thumb and Half Double Strikes



gst21a	gst2b	gst2c	gst2d	lgst2d
gst2e	gst2f			
tst21a	tst2b	tst2c	tst2d	ltst2d
tst2e	tst2f	tst2hg		
hst21a	hst2b	hst2c	hst2d	lhst2d
hst2e	hst2f	hst2hg	hst2ha	

Regular Triple Strikes



st3la st3b st3c st3d 1st3d st3e st3f st3hg
st3ha

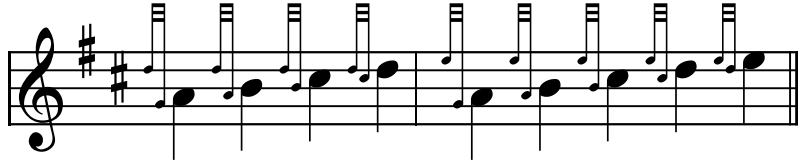
G Grace note, Thumb and Half Triple Strikes



gst3la gst3b gst3c gst3d lgst3d
gst3e gst3f
tst3la tst3b tst3c tst3d 1tst3d
tst3e tst3f tst3hg

hst31a hst3b hst3c hst3d lhst3d
 hst3e hst3f hst3hg hst3ha

Double Grace notes



dlg dla db dc elg ela eb ec ed
 flg fla fb fc fd fe
 glg gla gb gc gd ge gf
 tlg tla tb tc td te tf thg